

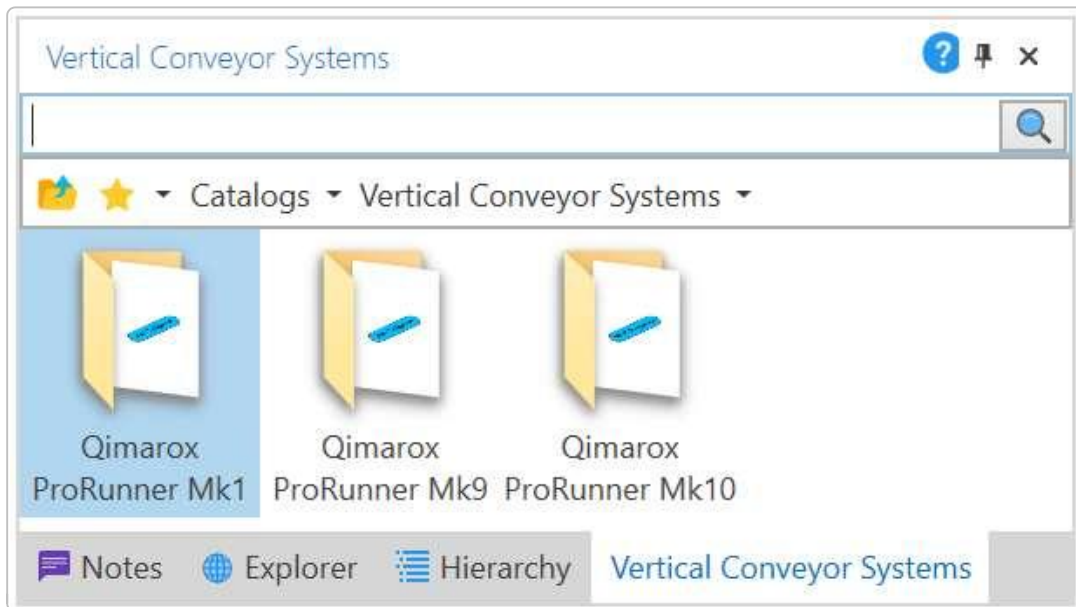
# Vertical Conveyor Systems

---

## Introduction

The **Vertical Conveyor Systems** catalog currently comprises:

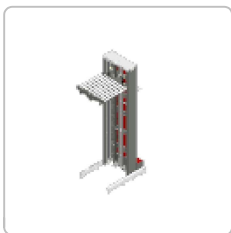
- Qimarox ProRunner Mk1
- Qimarox ProRunner Mk9
- Qimarox ProRunner Mk10



In the near future, it will also comprise:

- Qimarox ProRunner Mk5
- Qimarox ProRunner Mk5 XL

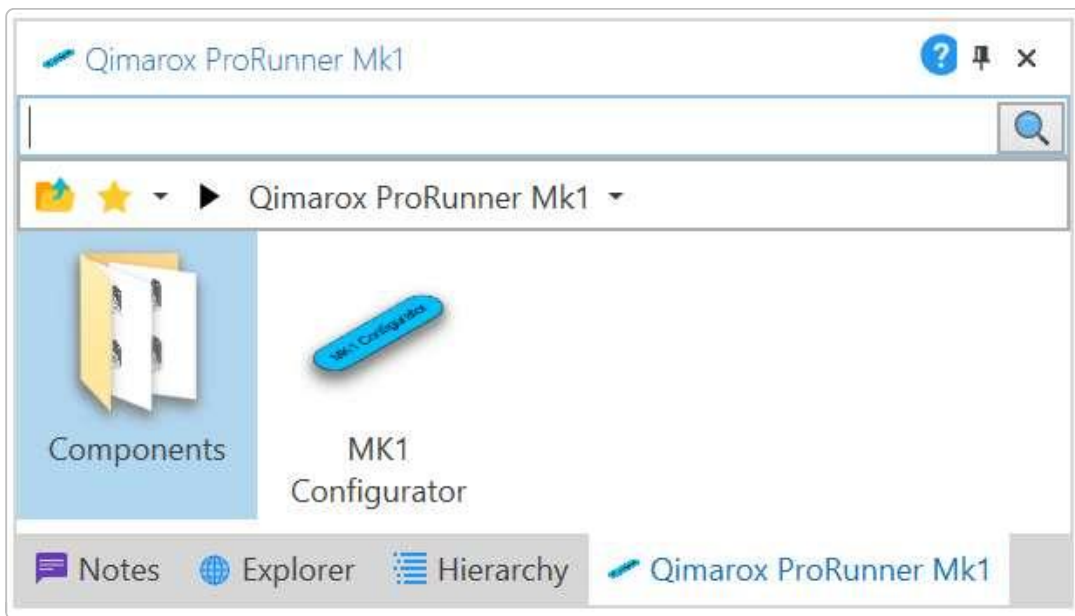
...with fully integrated track loop.



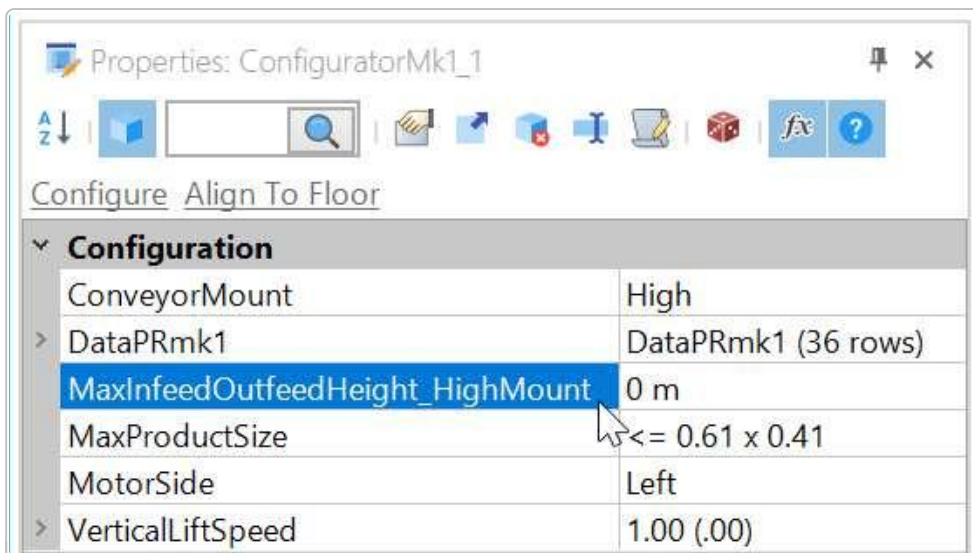
---

## Qimarox ProRunner Mk1

Navigate to the following sub-folder:



...and drag the **MK1 Configurator** into the model, to bring up the following properties:



Here is an explanation of the properties:

Property Name	Value Type	Purpose
ConveyorMount	Enumeration	"High" or "Low". Mount position of Forks.
DataPRmk1	Table	Set of available configurations.
MaxInfeedOutfeedHeight_HighMount	Distance	Applicable when <b>ConveyorMount</b> is "High". Highest infeed or outfeed height to be catered for.
MaxInfeedOutfeedHeight_LowMount	Distance	Applicable when <b>ConveyorMount</b> is "Low". Highest infeed or outfeed height to be catered for.
MaxProductSize	Enumeration	Choice of four pallet dimensions. Governs size of conveyor lift.
MotorSide	Enumeration	"Left" or "Right". Position of motor on top section.
VerticalLiftSpeed	SpeedProfile	Vertical speed of lift (including Acc & Dec).

Here is a snippet of the first ten configurations:

Table - DataPRmk1								
Edit Schema Edit In Analysis								
Drag a column header here to group by that column								
MaxInfeedOutfeedHeight_HighMount	MaxInfeedOutfeedHeight_LowMount	HeightPRmk1	BottomHeight	Mid_1250_Qty	Mid_1750_Qty	TopHeight		
2610	2360	2950	1475	0	0	1475		
2860	2610	3200	1725	0	0	1475		
3110	2860	3450	1725	0	0	1725		
3360	3110	3700	1975	0	0	1725		
3610	3360	3950	1975	0	0	1975		
3860	3610	4200	1475	1	0	1475		
4110	3860	4450	1725	1	0	1475		
4360	4110	4700	1725	1	0	1725		
4610	4360	4950	1975	1	0	1725		
4860	4610	5200	1975	1	0	1975		

Note

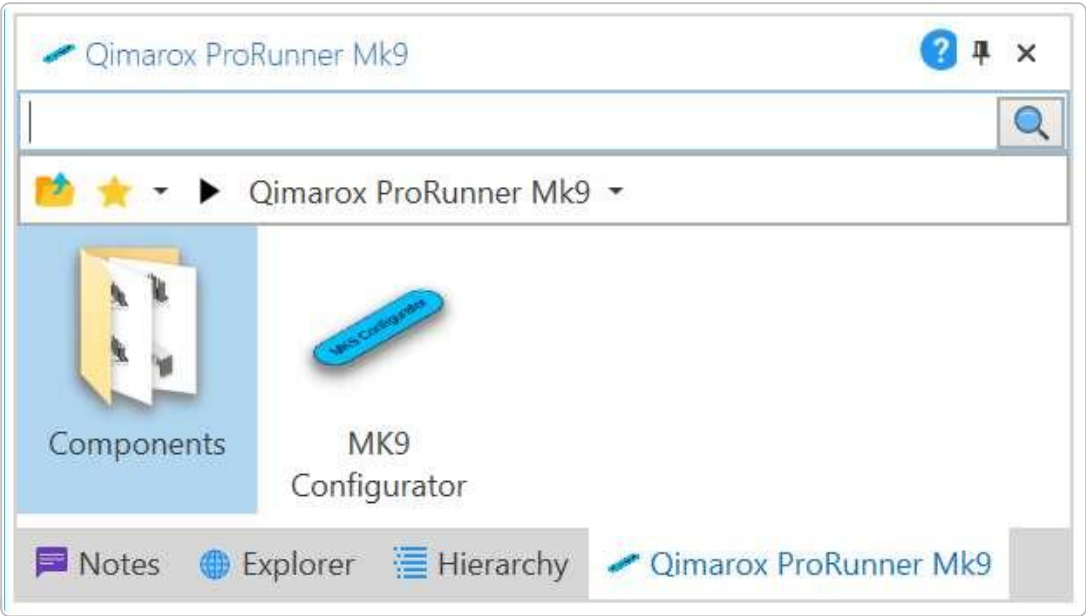
Setting the highest infeed / outfeed height to 0m or 100m, will create the shortest and tallest configuration, respectively.

Tip

Once you have all your settings finalized, run the **\*\*Configure\*\*** custom function!

## Qimarox ProRunner Mk9

Navigate to the following sub-folder:



...and drag the **MK9 Configurator** into the model, to bring up the following properties:



Here is an explanation of the properties:

Property Name	Value Type	Purpose
DataPRmk9	Table	Set of available configurations.
MaxInfeedOutfeedHeight	Distance	Highest infeed or outfeed height to be catered for.
VerticalLiftSpeed	SpeedProfile	Vertical speed of lift (including Acc & Dec).

Here is a snippet of the first ten configurations:

MaxInfeedOutfeedHeight	HeightPRmk9	BottomHeight	Mid_1250_Qty	Mid_1750_Qty	TopHeight
2124	2200	1475	0	0	725
2374	2450	1725	0	0	725
2624	2700	1975	0	0	725
2874	2950	1475	0	0	1475
3124	3200	1725	0	0	1475
3374	3450	1725	0	0	1725
3624	3700	1975	0	0	1725
3874	3950	1975	0	0	1975
4124	4200	1475	1	0	1475
4374	4450	1725	1	0	1475

#### Note

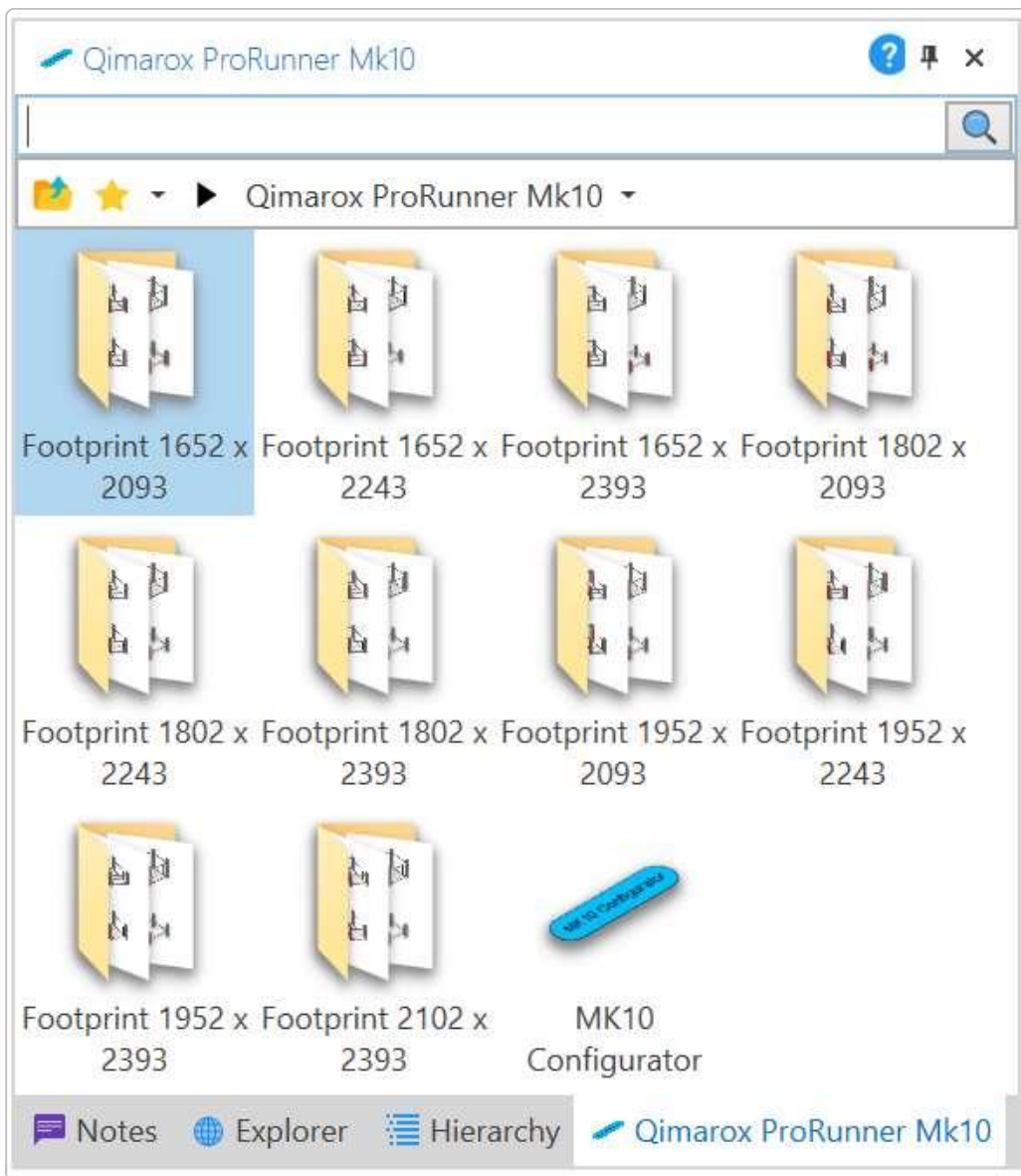
Setting the highest infeed / outfeed height to 0m or 100m, will create the shortest and tallest configuration, respectively.

#### Tip

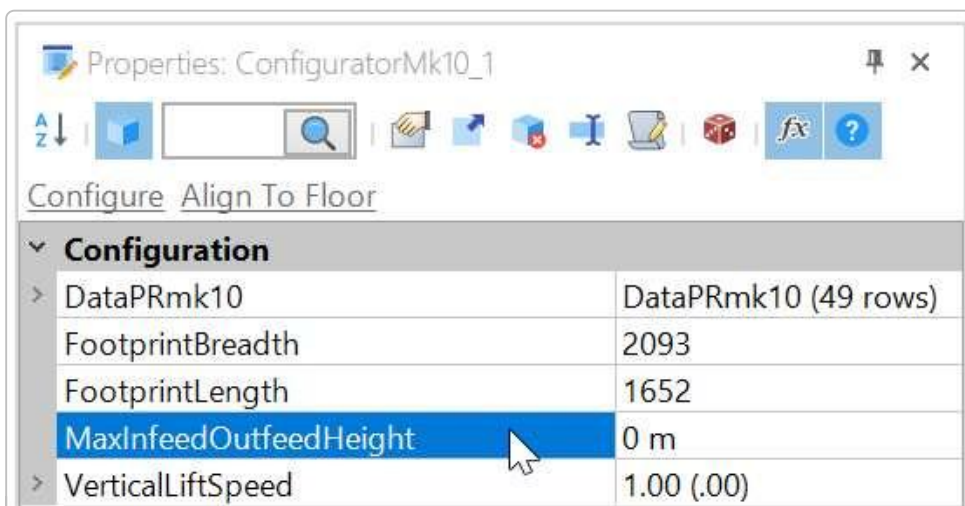
Once you have all your settings finalized, run the **\*\*Configure\*\*** custom function!

## Qimarox ProRunner Mk10

Navigate to the following sub-folder:



...and drag the **MK10 Configurator** into the model, to bring up the following properties:



Here is an explanation of the properties:

Property Name	Value Type	Purpose
DataPRmk10	Table	Set of available configurations.
FootprintBreadth	Enumeration	Units in <b>mm</b> . "2093", "2243" or "2393"

Property Name	Value Type	Purpose
FootprintLength	Enumeration	Units in <b>mm</b> . "1652", "1802", "1952" or "2102"
MaxInfeedOutfeedHeight	Distance	Highest infeed or outfeed height to be catered for.
VerticalLiftSpeed	SpeedProfile	Vertical speed of lift (including Acc & Dec).

Here is a snippet of the first ten configurations:

Table - DataPRmk10

Edit Schema Edit In Analysis

Drag a column header here to group by that column

MaxInfeedOutfeedHeight	HeightPRmk10	BottomHeight	Mid_1250_Qty	Mid_1750_Qty	TopHeight	
2930	2950	1475	0	0	1475	^
3180	3200	1475	0	0	1725	
3430	3450	1725	0	0	1725	
3680	3700	1725	0	0	1975	
3930	3950	1975	0	0	1975	
4180	4200	1475	1	0	1475	
4430	4450	1475	1	0	1725	
4680	4700	1725	1	0	1725	
4930	4950	1725	1	0	1975	
5180	5200	1725	0	1	1725	v

Note

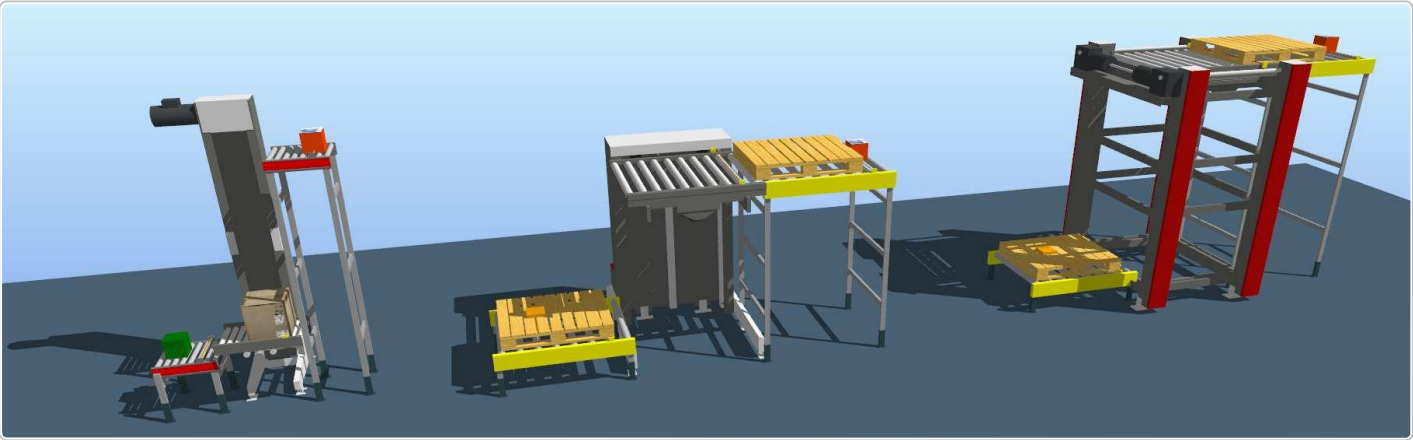
Setting the highest infeed / outfeed height to 0m or 100m, will create the shortest and tallest configuration, respectively.

Tip

Once you have all your settings finalized, run the **\*\*Configure\*\*** custom function! Example model in next section!

# Example Model

[Example Model - 20181106](#)



# Source Catalog

[Source - 20181106](#)